



Towards A Framework for Cyber Social Status Based Trusted Open Collaboration

Oct. 9, 2010

Jaehong Park, Yuan Cheng, Ravi Sandhu
Institute for Cyber Security
University of Texas at San Antonio

Open Collaboration?



Collaboration

- **Closed Collaboration**
 - Information and resource sharing amongst selected participants
- **Open Collaboration**
 - Anyone can participate
 - Proven to be productive
 - Inherently a social activity, hence trust establishment needs a social computing

Trusted Collaboration

- **Trusted Closed Collaboration**
 - Trustworthiness of selected users and shared resource is verified
- **Trusted Open Collaboration (TOC)**
 - **NOT MEAN** an open collaboration system with a guaranteed trustworthiness
 - **MEANS** a discriminative measure (for example, cyber social status in our case) can be facilitated in open collaboration to provide certain degree of trust to participants.

Open (source) Collaboration Principles

- *Egalitarian*
 - *Everyone can contribute*, because open source projects are accessible on the Internet and the project community is typically inclusive to anyone who wants to help.
- *Meritocratic*
 - *Contributions are judged* transparently and *based on their merits*. All decisions are discussed publicly on mailing lists and can be looked up for reference.
- *Self-organizing*
 - There is typically no defined process imposed from the outside so the project *community itself determines how to go about its work*.
- By Dirk Riehle et al. “Bringing Open Source Best Practices into Corporations.” IEEE Software, 2009

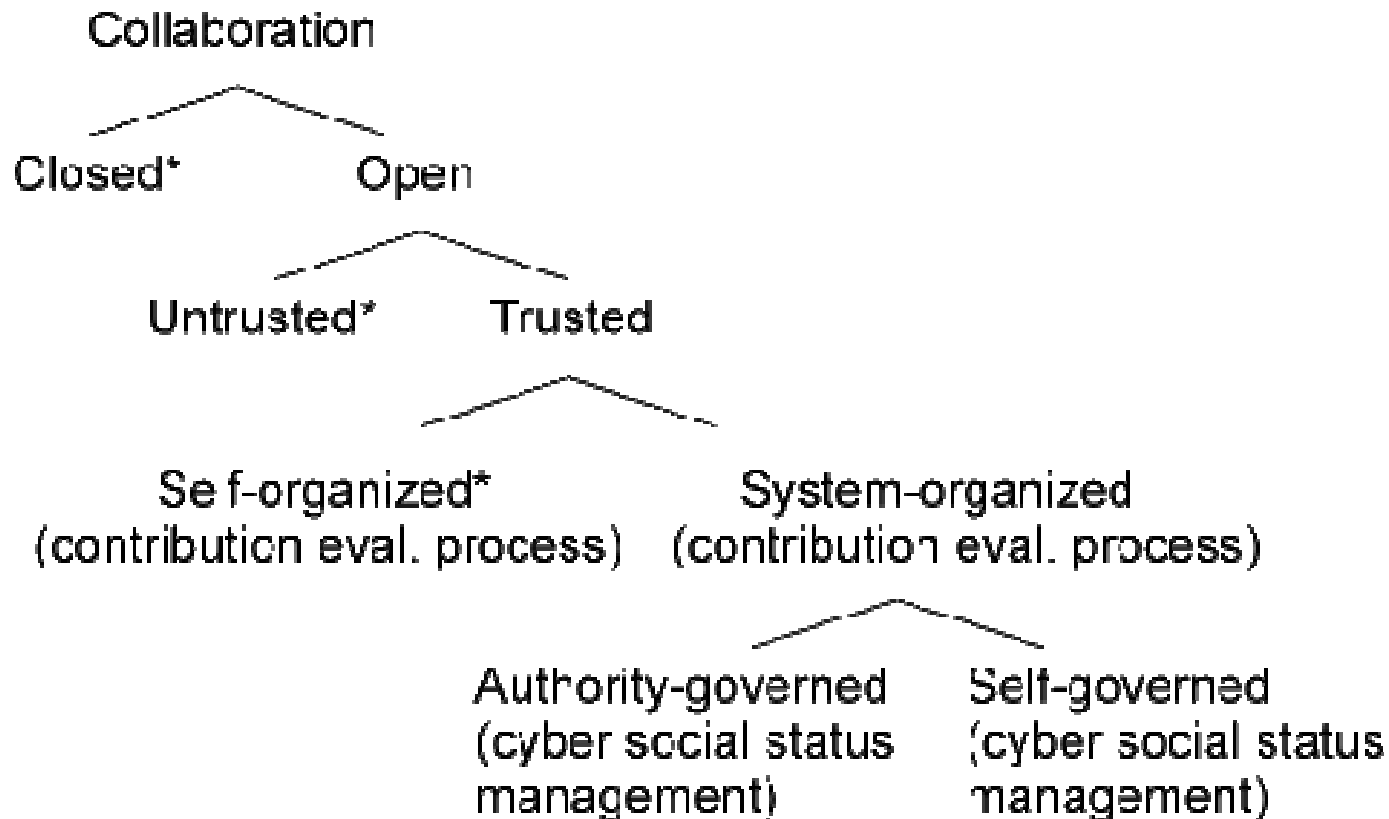
TOC: Three Principles

- **Egalitarian**
 - user with equal footing
 - anyone can participate (contribute and get benefit)
 - No user account or anyone can create an account
 - Not necessarily means all contributions are valued equally
- **Meritocratic**
 - contribution-based weighted value of user and resource
 - True only to a certain degree since
 - Contribution-based discriminative social standing can allow a user to influence other users' social standing
 - Social standing can be given by authority or other social activities, not by contribution (or merit)
- **Discriminative**
 - Trust is based on **selective discrimination** of participants and resources
 - Discrimination is based on various **cyber social statuses**

TOC: Two Criteria

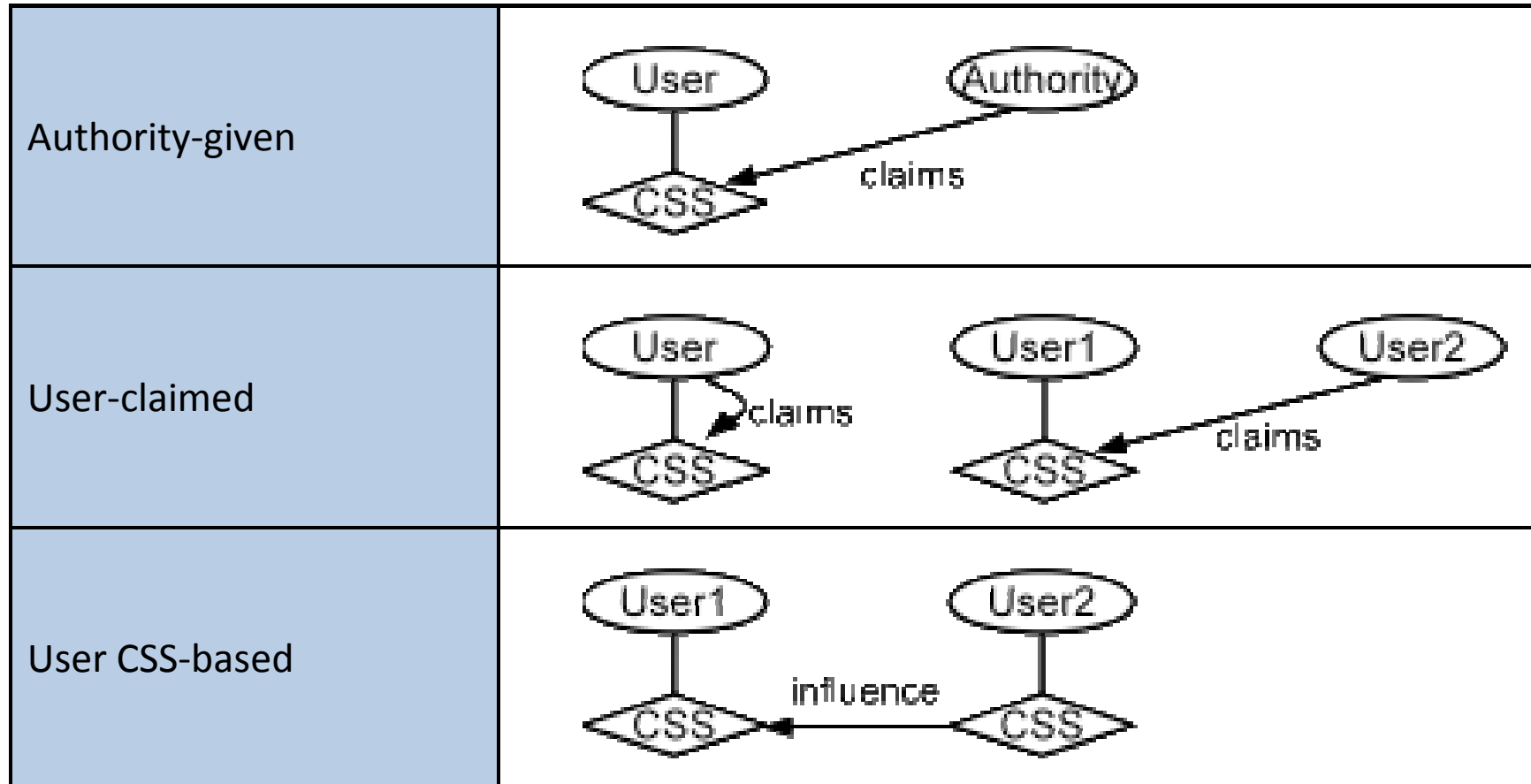
- Contribution evaluation process
 - Self-organized
 - Collaboration community decides the process (No pre-imposed process from outside)
 - System-organized
 - Evaluation process can be pre-imposed by system
 - E.g., In wiki, the system may allow an expert to delete other's shared resource
- Cyber Social Status (CSS) management
 - Self-governed
 - Collaboration community itself (participants' activities) generates and manages CSS
 - User participation in governing social status and social activity
 - Authority-governed
 - CSS is given by an authority who is not a participant

Collaboration Taxonomy


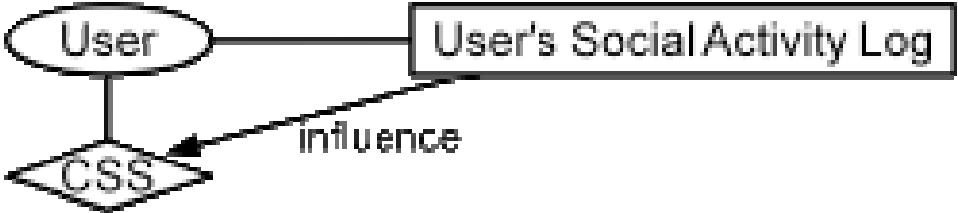
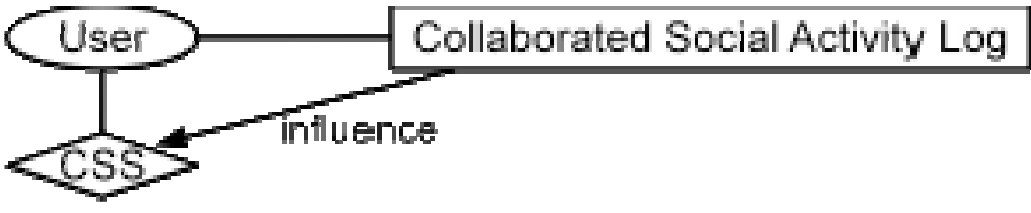


*Out of Scope

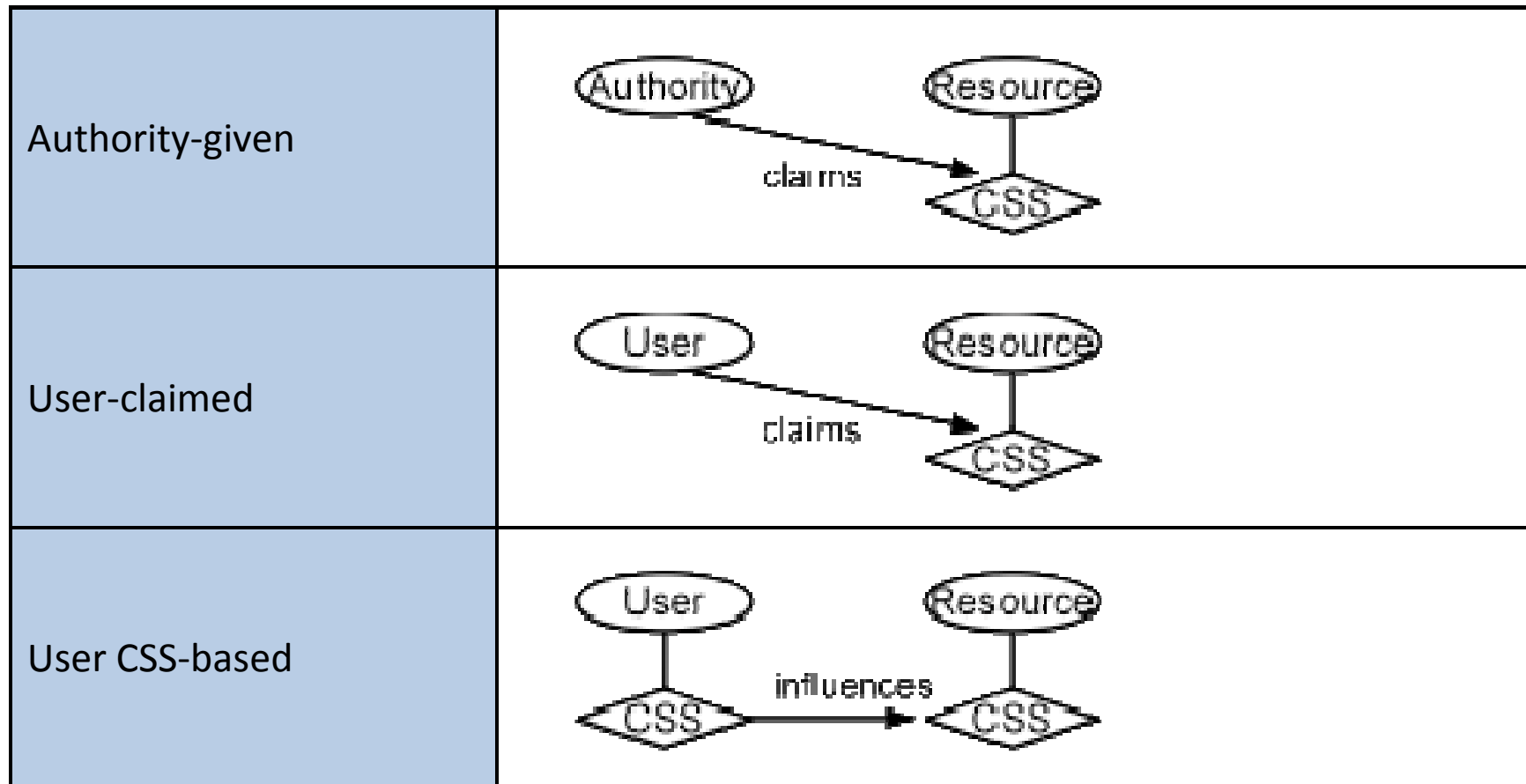
User Cyber Social Status (u-CSS)



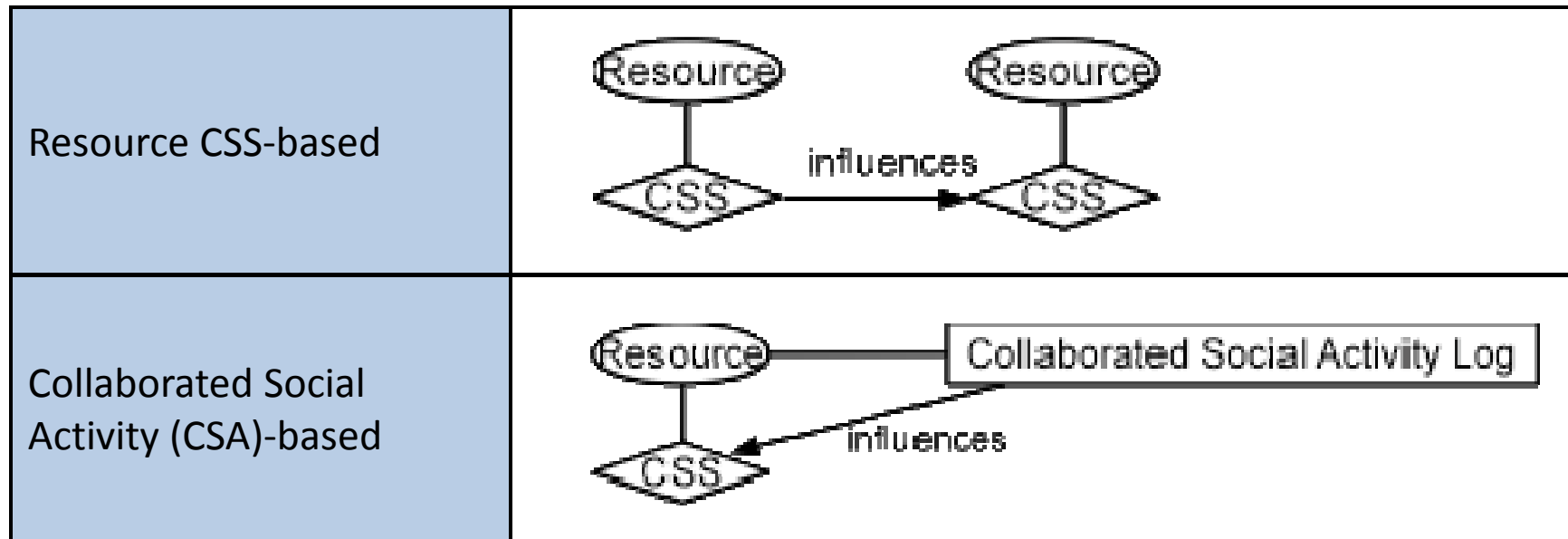
User Cyber Social Status (u-CSS) – cont.

Resource CSS-based	 <p>The diagram shows two ovals labeled 'User' and 'Resource' at the top. Below each oval is a diamond labeled 'CSS'. A horizontal arrow labeled 'influences' points from the 'Resource' CSS diamond to the 'User' CSS diamond.</p>
User-participation-based	 <p>The diagram shows an oval labeled 'User' at the top left. Below it is a diamond labeled 'CSS'. To the right is a rectangular box labeled 'User's Social Activity Log'. A line connects the 'User' oval to the box. A diagonal arrow labeled 'influence' points from the box to the 'CSS' diamond.</p>
Collaborated Social Activity (CSA)-based	 <p>The diagram shows an oval labeled 'User' at the top left. Below it is a diamond labeled 'CSS'. To the right is a rectangular box labeled 'Collaborated Social Activity Log'. A line connects the 'User' oval to the box. A diagonal arrow labeled 'influence' points from the box to the 'CSS' diamond.</p>

Resource Cyber Social Status (r-CSS)



Resource Cyber Social Status (r-CSS) – cont.



Characteristics of u-CSS Types

CSS Type	CSS Governing	Meritocracy	CSS Vulnerability
Authority-given	authority	Not meritocratic	No Sybil Attack
User-claimed	Self or other user	Not meritocratic	If self, no Sybil Attc. If other, depends on difficulty of user claiming
User CSS-based*	Depends on added CSS type	No, alone. Meritocratic w/ CSA-based u-CSS	No Sybil Attack alone
Resource CSS-based	users	Meritocratic w/ CSA-based r-CSS	Vulnerable if r-CSS can be generated by CSA
User participation-based	self	limited meritocratic (no others' eval.)	No Sybil Attack
CSA-based	users	Meritocratic	Vulnerable to Sybil Attack

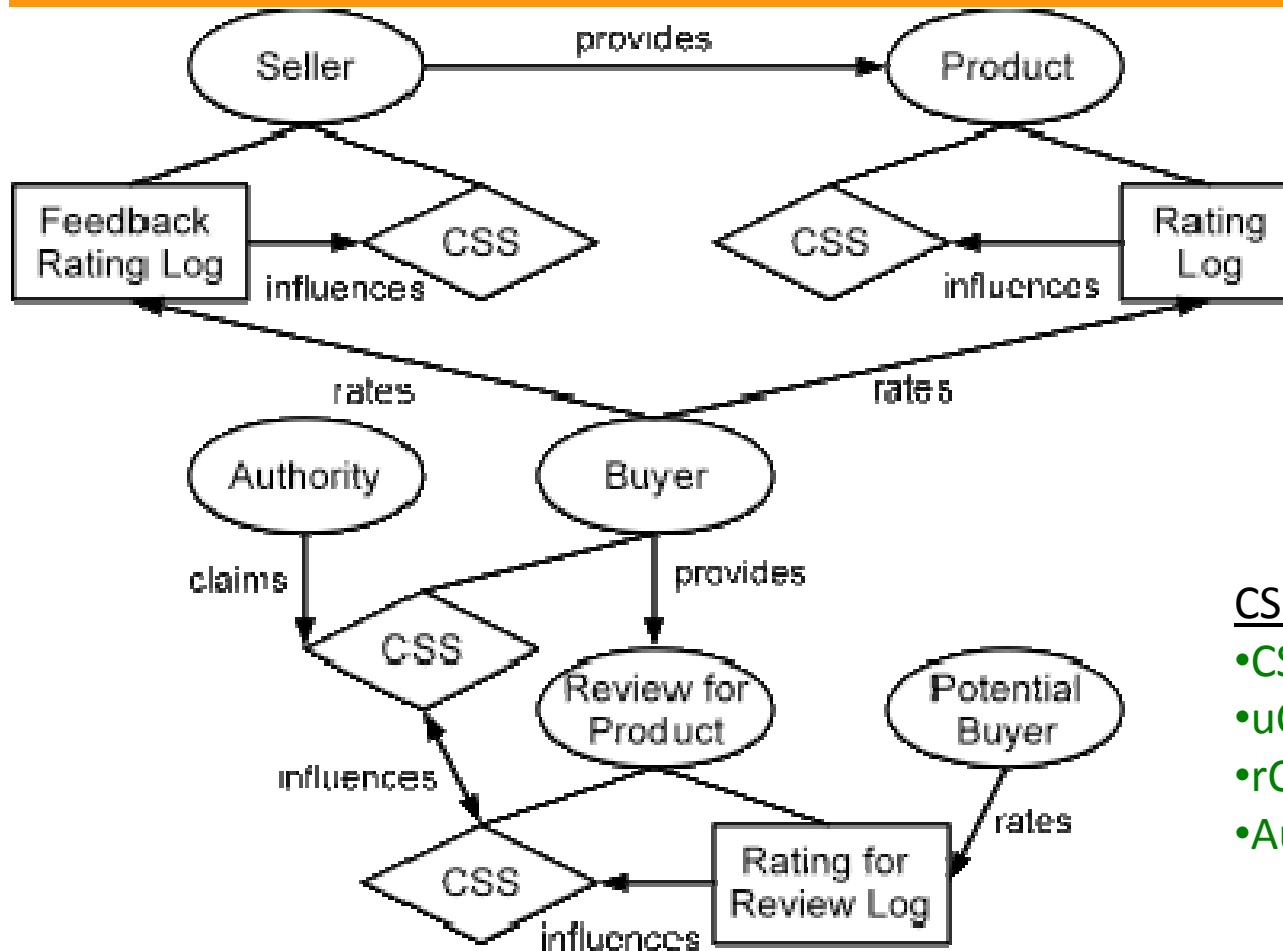
*Needs other u-CSS type(s)

Characteristics of r-CSS Types

CSS Type	CSS Governing	Meritocracy
Authority-given	authority	Not meritocratic
User-claimed	User	Not meritocratic
User CSS-based	User	Not meritocratic
Resource CSS-based*	Depends on additional r-CSS type	Meritocratic w/ CSA-based r-CSS
CSA-based	Users	Meritocratic

*Needs other r-CSS type(s)

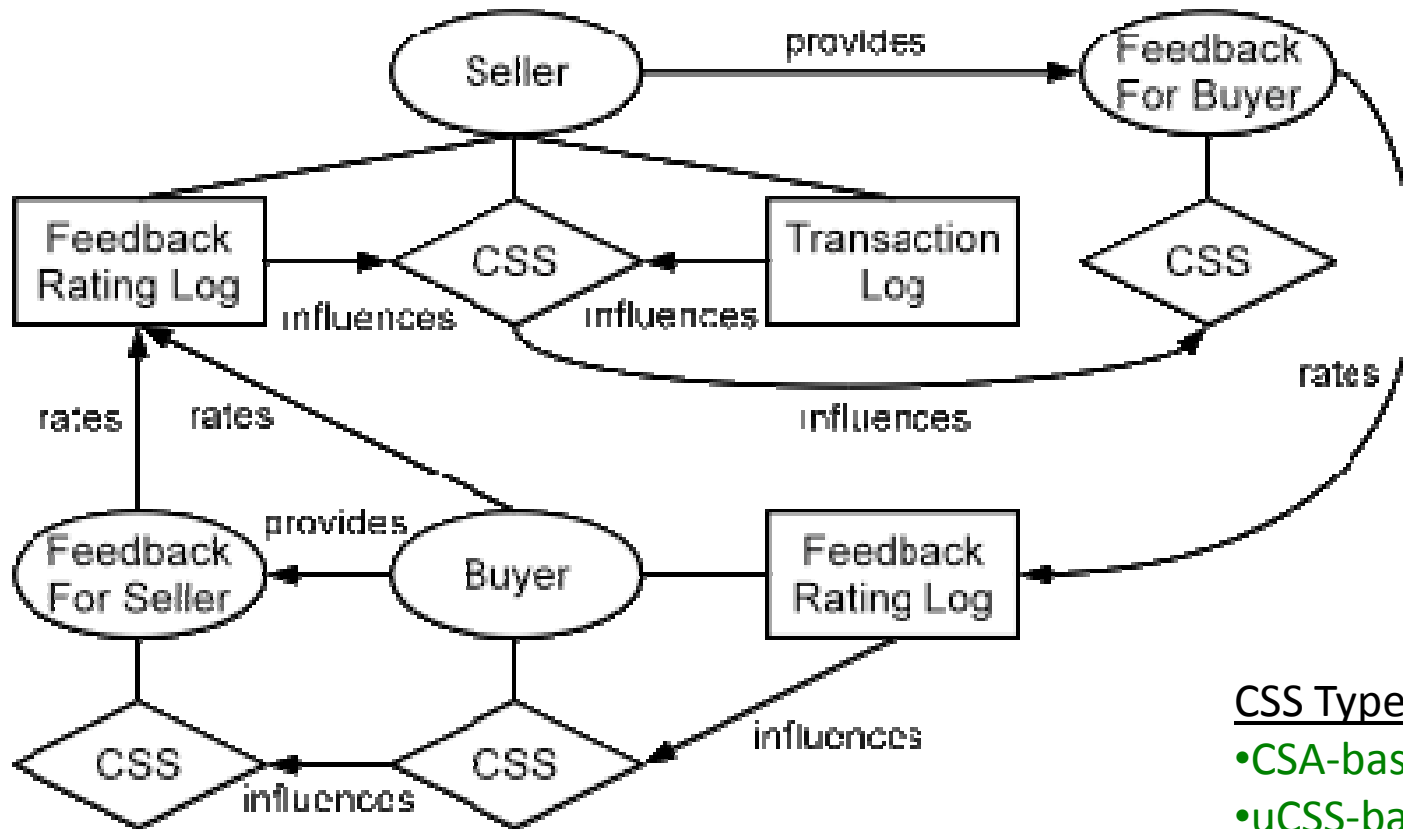
Amazon-like TOC



CSS Types used:

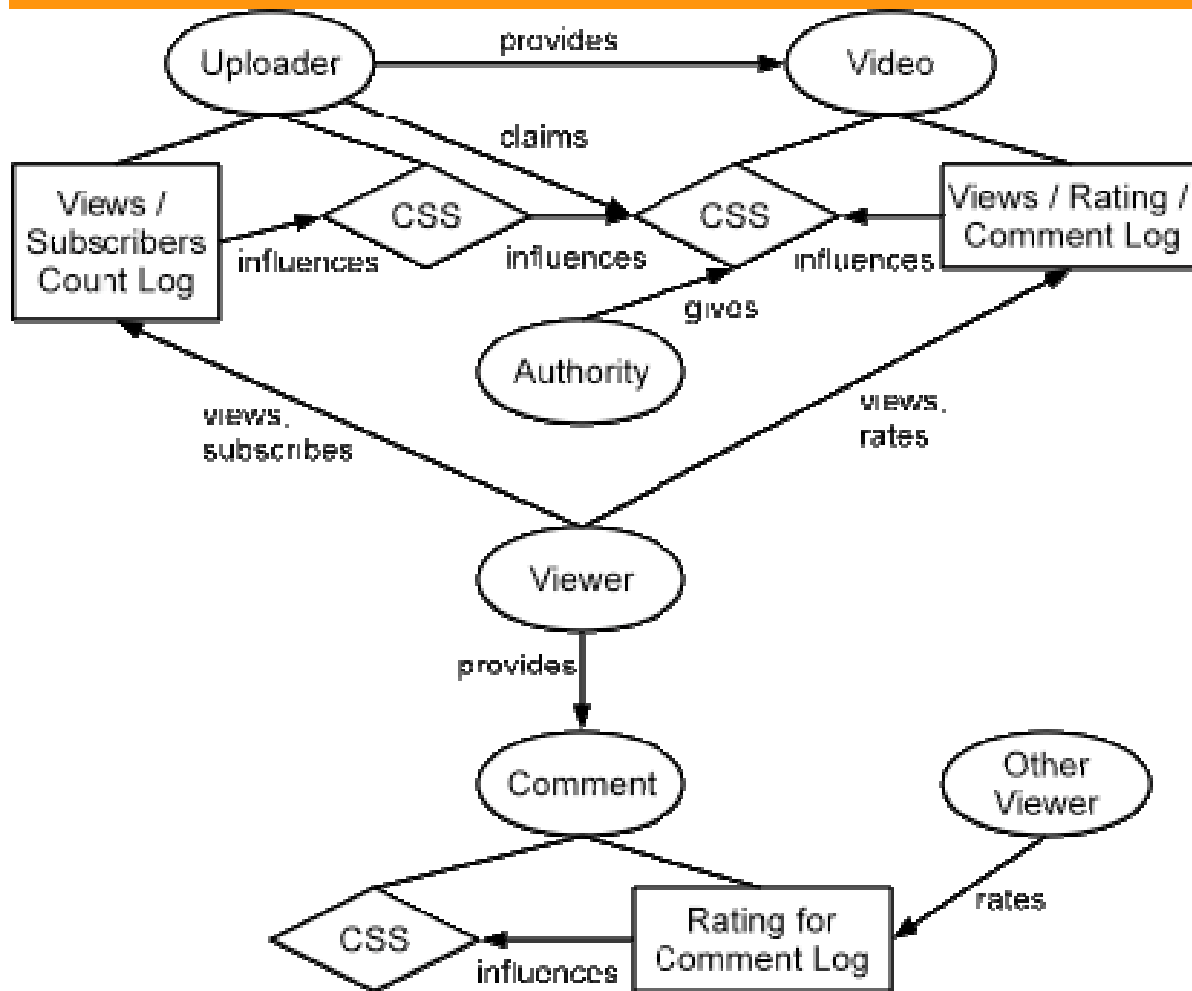
- CSA-based uCSS/rCSS
- uCSS-based rCSS
- rCSS-based uCSS
- Authority given uCSS

eBay-like TOC



- CSS Types used:
- CSA-based uCSS
 - uCSS-based rCSS

YouTube-like TOC



CSS Types used:

- CSA-based uCSS/rCSS
- uCSS-based rCSS
- User-claimed rCSS
- Authority given rCSS

Questions? Comments?